

Kcenter

Sophisticated Document Management, Workflow and Collaboration

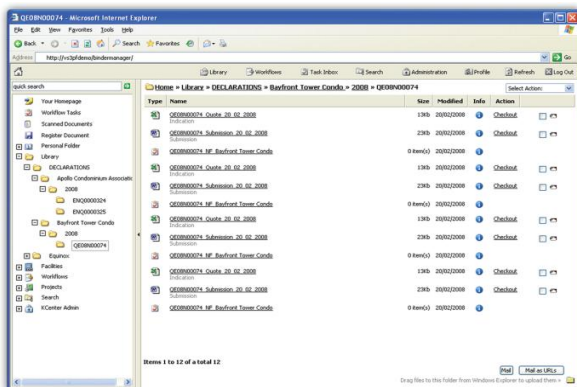
Kcenter delivers sophisticated yet intuitive Document Management, Business Workflow, Project Collaboration and Search to the Enterprise. Deployed over the Internet, Kcenter leverages the scalability and low cost of ownership of web technologies.

What does Kcenter Deliver?

With the web browser as its interface, Kcenter's features are intuitive to use and globally accessible removing geographical and technological barriers. Deployable 'out-of-the-box', Kcenter provides all the required features to securely manage an organisation's documents and access to the right information at the right time. By implementing a three-tiered architecture over a web infrastructure, Kcenter scales from a few users to thousands.

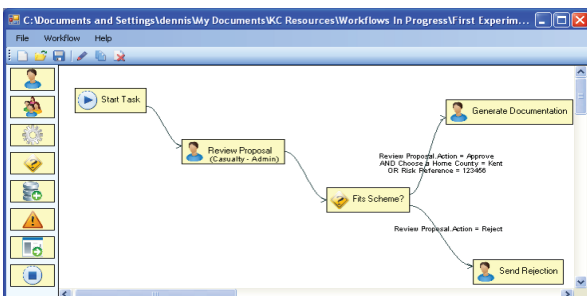
Robust Document Management

Powerful and robust document management with secure storage enabling filing and access of documents and other digital assets of any type. Every object stored in the system is secured with multiple layers of security.



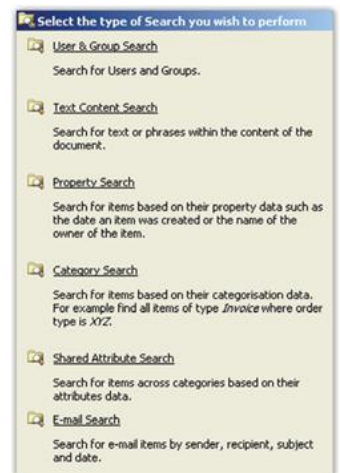
'Drag & Drop' Workflow Designer

The powerful workflow engine allows the creation of business process applications by non-programmers using a graphical 'drag & drop' process designer. The workflow tasks can be assigned to individuals or groups with varying security rights to preserve the integrity of data across the business process. Process documentation is automatically created to support audit and compliance requirements.



Powerful Search Tools

Kcenter's powerful search tools enable users to locate information within Kcenter, based upon information contained within documents, news items, projects or workflows, or through indexing information stored along with the document (such as UMR Document type or Client). Search results can be viewed with the sought terms summarised and highlighted thus enabling a quick review of the results list.



Project Collaboration

Projects enable the creation of secure virtual teams with designated members and co-ordinators. Projects provide a private document store as well as news and discussion groups for their members. Each project has its own virtual 'home page' and tasks allow the virtual team to organise its activities efficiently and effectively.

Extensive Developer Web Services API

Kcenter further provides an extensive Web Services Application Programmer's Interface (API) allowing developers to customise the product's functionality, as well as allowing integration with other applications. The API has been developed as a set of COM (component object model) objects that can be used in Microsoft's Visual Studio and other environments supporting COM objects.

Would you like to know more?

If you want to know more about the product or KnowledgeCenter, please call us on +44 (0)203-004-7100 or email info@kcenter.co.uk